

PROJECT SPOTLIGHT

CHASE CENTER

San Francisco, CA



Spec at Warriors' Chase Center is Intense and Lighting Designer Friendly

When the Golden State Warriors settled on an 11 acre site in the expensive Mission Bay neighborhood of San Francisco, their task was to attract both the high-end audience of the Bay Area tech boom and the die-hard local fans who had packed the Oakland Arena across the bay for 47 seasons. Gensler designed the Warriors' new arena with bold, ultra-white geometries overlaid with grounding, traditional finishes.

The Chase Center complex is the first privately financed modern sports arena, with funding including presales of luxury boxes and suites designed for Silicon Valley

corporations and wealthy individuals. A range of clubs named for various consumer brands give fans with seats on and near the floor access to bars and dining at different levels of exclusivity. Matthew Levesque, founder and principal designer of first circle design, described some of the challenges of lighting a single project with so many different personalities: "There's 10,000 fixtures on this project – not including decorative – and I can't stress enough how amazing it was to have one downlight company throughout the whole arena. That was done strategically because of time management, cost, and the fact that that the MX and Gravity families from Intense Lighting gave us



“There’s 10,000 fixtures on this project – not including decorative – and I can’t stress enough how amazing it was to have one downlight company throughout the whole arena.”

- Matthew Levesque,
founder and principal designer
of first circle design

all the design tools we would ever need to light all the diverse spaces in this arena.”

The MX series of track heads and downlights in high CRI answered all the downlighting and accent lighting needs in the various hospitality areas. The option of layering optical accessories; an array of beamspreads, including a wallwash distribution; square, round, and pinhole trims; damp and wet listing options; and

a variety of lumen packages and color temperatures suit the different needs of each area of the arena and the array of ceiling heights. Meeting the demand for multiple presets, all the MX fixtures dim to 1% on 0-10V, and the LEDs match output and color up and down the dimming curve.

Levesque described how the seating arrangements and angle in the arena bowl drove changes in ceiling heights and



on the fly as the design progressed and ownership made programmatic adjustments, with little to no impact to the electrical loads or costs.” The cost benefits include multiple parties. First, a single point of contact for the electrical contractor and the distributor helped with procurement schedule management. The owner gained the advantage of large-volume pricing. And then the team operating this massive arena will find maintenance, any warranty issues, and troubleshooting much easier.

“And then finally us, on the lighting design side, choosing Intense as the single downlight vendor helped our bottom line, as well. We made adjustments as the design progressed, but we didn’t have to reinvent the wheel, researching new vendors. We established our spec and then adjusted accordingly. Even not having to research photometrics from multiple vendors – it all just kept the noise down and allowed us to focus on the design challenge in front of us.”

pushed the arrangement of ceiling systems, including lighting, in the hospitality spaces. “From a design point of view, we were able to pivot the lighting specs and layouts



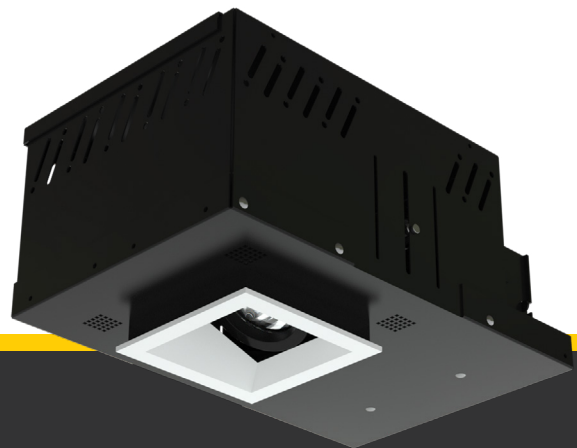


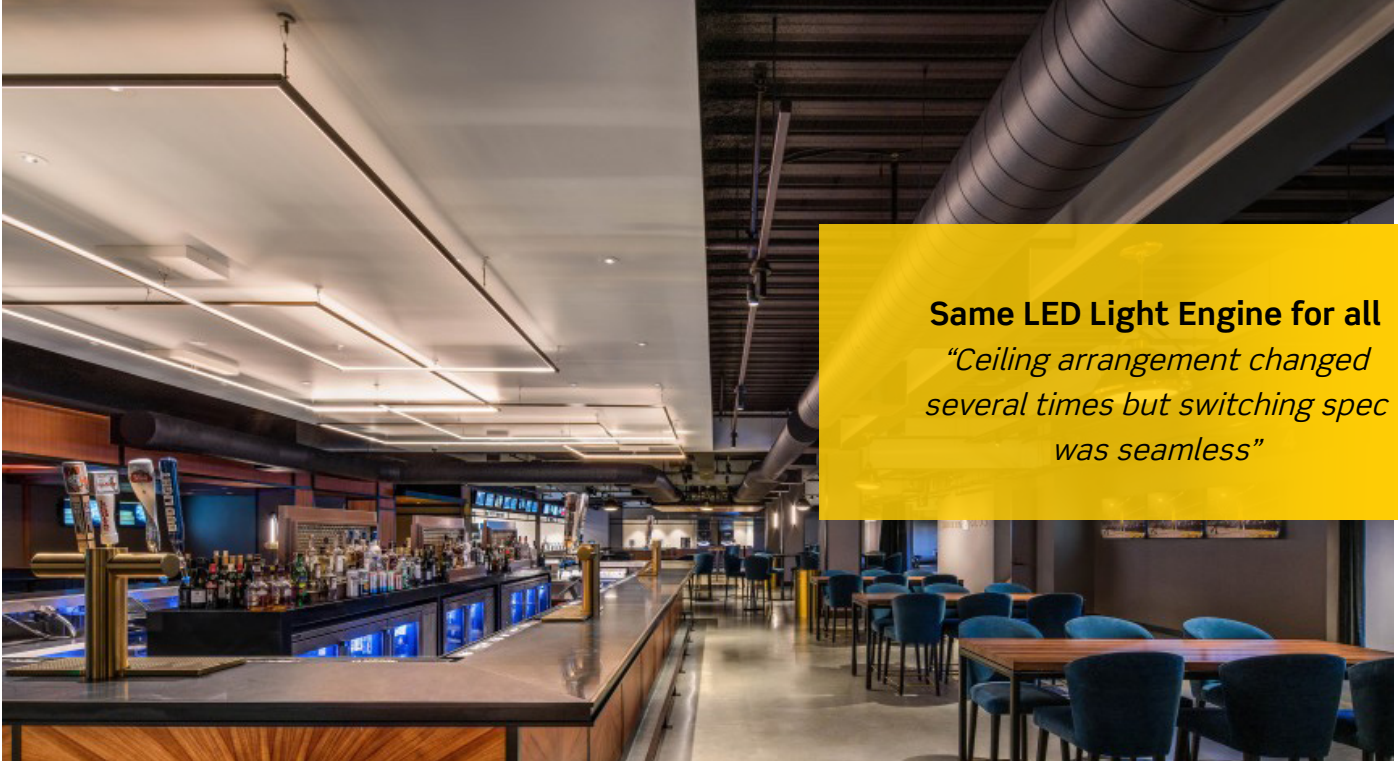
Club Suite

The layered lighting design in a Club Suite feels intimate and comfortable for patrons. “The 3.5 inch square MX downlights plus one linear lighting company and a decorative fixture: that’s it,” Levesque explained. “Making the lighting as simple as possible from a specification

and layout point of view, it allows all the materials and the articulation of the interiors to come forward.” The team constructed a detailed prototype off site, allowing refinements of the design. The model then served the arena’s sales team, which pre-sold almost all the suites.

“Making the lighting as simple as possible from a specification and layout point of view, it allows all the materials and the articulation of the interiors to come forward.”





Same LED Light Engine for all
“Ceiling arrangement changed several times but switching spec was seamless”

United Club

“The United club is a good example of managing ceiling conditions. You see decorative lighting at key elements coordinated with the interior design team. But then the functional lighting is in both the open ceiling and the dropdown ceiling.” Levesque went on to explain that the ceiling arrangement changed several times over the course of the project, but switching the spec between the

MX track heads in the open ceiling and MX downlights in the dropdown was “seamless.” The same LED light engine in both produced the same color, optics, and accessory options needed. Directly over a bar or food service area, the simple addition of a lens or increase in lumen package met health and safety codes.

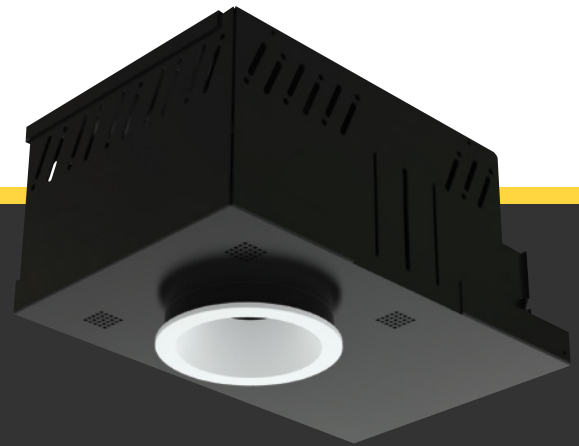




Chase Club

The Chase Club offers buffet service and more-open gathering spaces than other private clubs. Despite some rather complex geometry, square-aperture MX downlights in the coffers and the wood ceiling help knit the various

spaces together. Optics and aiming angles define the different seating areas and traffic patterns, while bringing out the luxe interior.



J.P. Morgan Club

A 3.5 inch round downlight with just slightly different optics provides a less moody wash of light in the J.P. Morgan Club. Levesque pointed out: "Again, from a spec management point of view, it's the same architecture within the fixture. There's simplicity in the spec, yet we're able to create a completely different feel in the space. It helped us a lot."

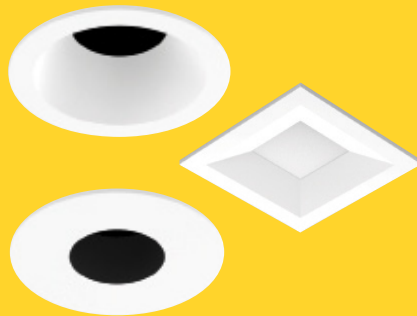
OPTIC OPTIONS

"We're able to create a completely different feel in the space"



Theater Boxes

The Theater Boxes offer a private dining atmosphere. “Staying in the MX series, we changed the trim to a pinhole to reduce the size of the aperture and added a hex louver in places. It’s in-scale with the experience; just a little dot of light.”



100+ Trim Options

From open downlight to pinhole trim, it’s in-scale with the experience and maintained the dramatic atmosphere

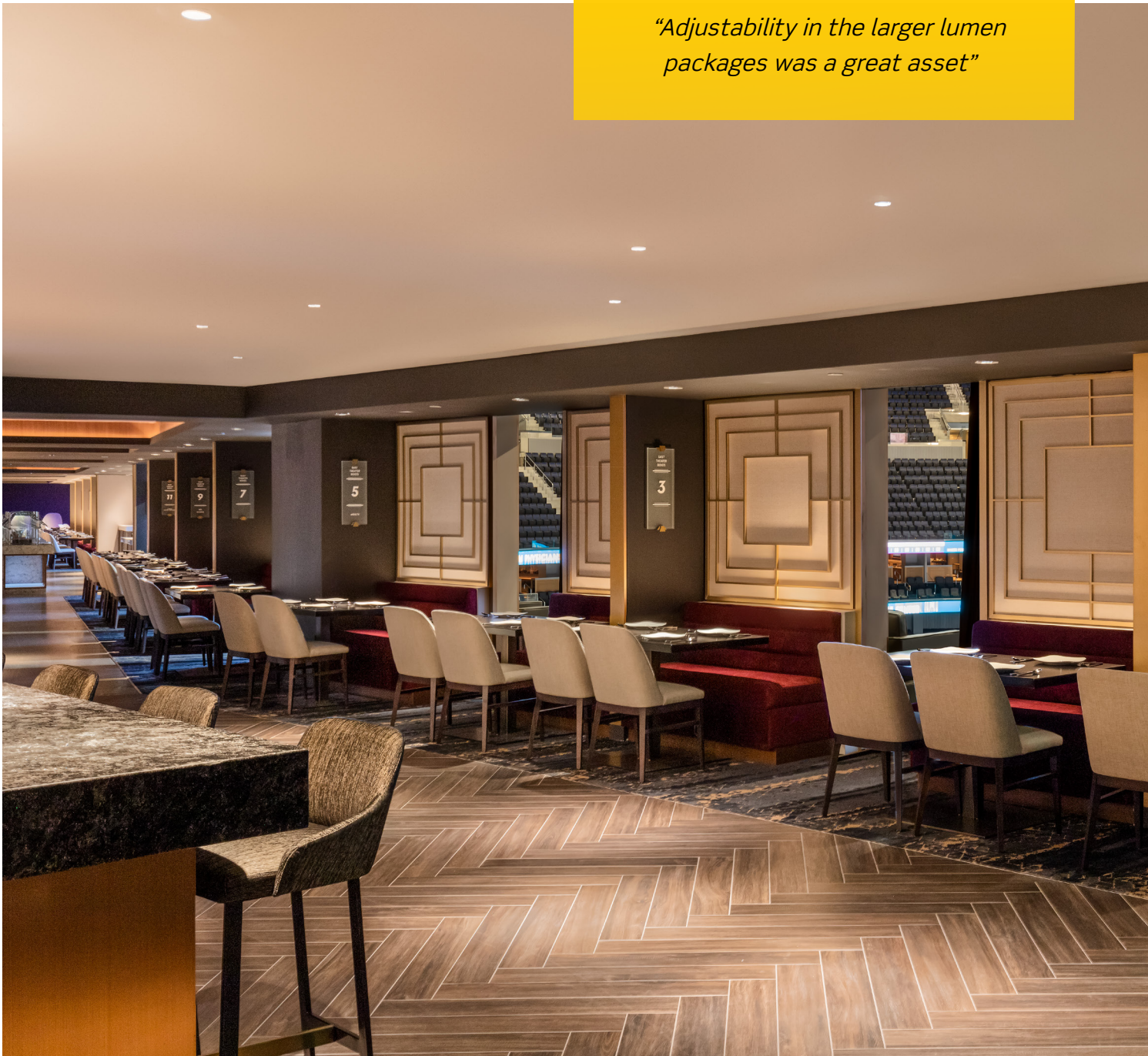
Owners Lounge

“The Owner’s Lounge, because of its palette and the desire for a more intimate feel, is the only space in the arena that is 2700K. Everything else in the arena is 3000K,” Levesque said. MX series square accent lights in the upper ceiling – about 22 ft – provide plentiful lighting on the trophy case wall and on the dining area below. In the 8 ft high perimeter

ceiling, square MX downlights create a consistent look. “Matching the shape of the trim, they look exactly the same, which was a key element. Adjustability in the larger lumen packages was a great asset. The only thing we had to do was manage the lumen output and the optics.”

Extensive Lumen Packages up to 1850lm

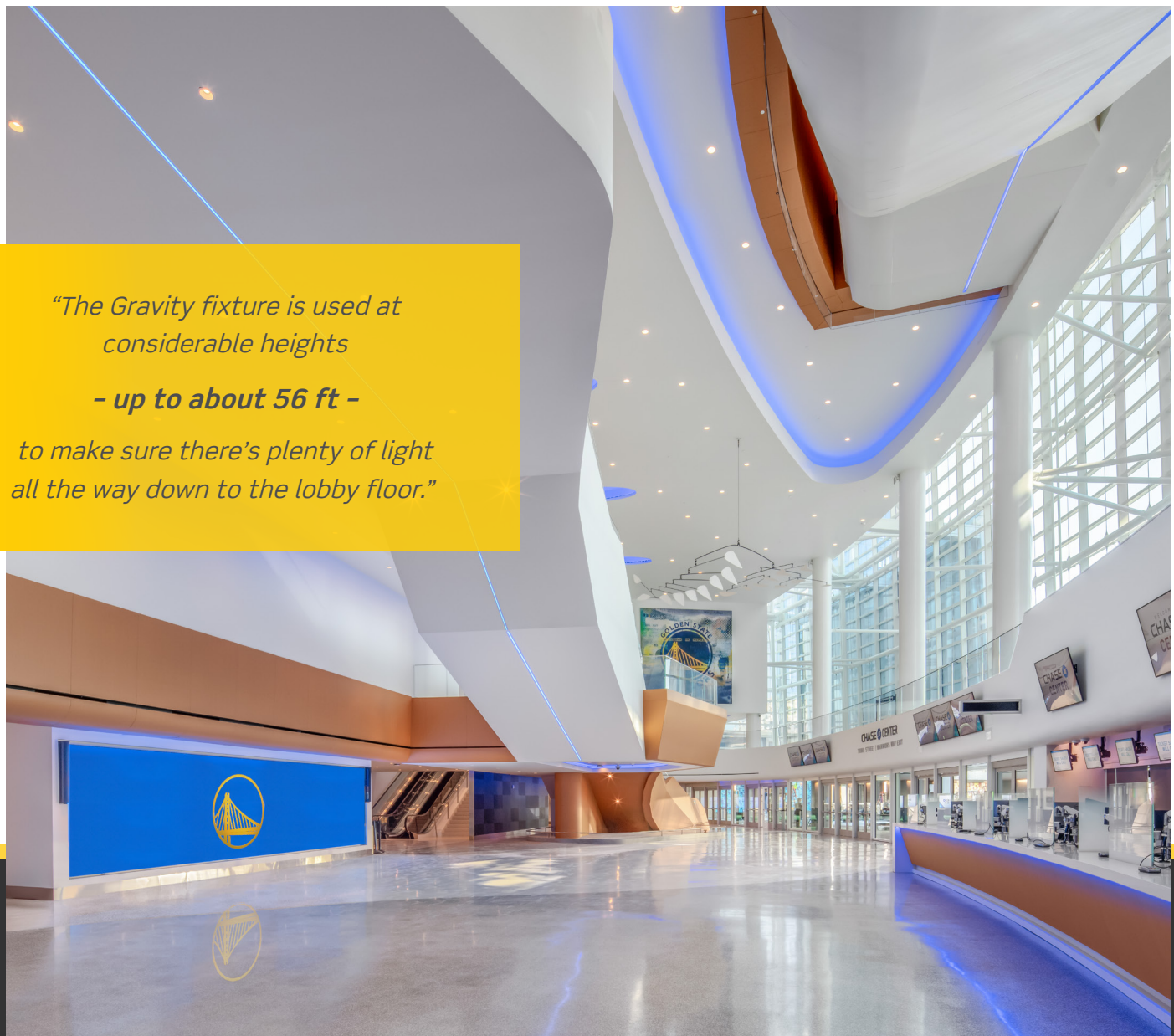
“Adjustability in the larger lumen packages was a great asset”




Grand Lobbies

The exceptions to the “MX-fits-all” rule are the Chase Center’s high-ceilinged lobbies where Gensler’s modern architecture is proudly expressed and highly visible through the façade. Levesque went for “more horsepower”, choosing Intense Lighting’s 4 and 6 inch Gravity downlights for their “even field and beam.” (Levesque comes from a theatrical background where the beam angle [familiar to architectural lighting designers] is the perimeter at which light intensity drops to 50% of the center beam intensity, and the field angle is the perimeter at which light intensity drops to 10% of center.)

“The Gravity fixture is used at considerable heights – up to about 56 ft – to make sure there’s plenty of light all the way down to the lobby floor. Also, the geometry in the ceiling doesn’t necessarily align to the area you’re trying to light down below, and because Gravity’s beam is so smooth, between the beam and field of the fixture you can’t tell how much they’re overlapping. Even where some downlight strikes an architectural element, because of the way the light feathers off, you don’t even see it. That’s a huge asset when you’re trying to deal with something of this scale and this much complex geometry,” Levesque said.



*“The Gravity fixture is used at considerable heights
- up to about 56 ft -
to make sure there’s plenty of light all the way down to the lobby floor.”*



"Gravity performed great for the arena lobbies' soaring ceiling conditions, and then we transitioned to the MX in lower parts of the lobby. With these hugely variable ceiling heights, Gravity and MX, they marry just fine."

Intense Lighting

3340 E. La Palma Ave.
Anaheim, CA 92806

tel 714 630-9877

fax 714 630-9883

info@intenselighting.com

www.intenselighting.com

A Leviton Company

www.leviton.com

Printed in the U.S.A
©2021. Intense Lighting, LLC. All Rights Reserved.

INT0920-PS-1