

MR16-MXGU53RTL4

MX MR16 LED GU5.3 Recessed Multiple Trimless (4) Head

| | | | |
|----------|--|----------------|--|
| JOB NAME | | CATALOG NUMBER | |
| NOTES | | TYPE | |

FEATURES

- Uses MX accessories with LED lamps
- Easy lamp access with quarter turn cap
- MX construction and quality finishes
- Up to 30° Vertical Adjustment
- 360° Horizontal Adjustment

LAMP (ORDERED SEPARATELY)

- 12V MR16 GU5.3 LED 15W max.
- 12V MR16 GU5.3 Halogen 35W max. (must use MR16 with front cover glass)

LED MR16 COMPATIBILITY

This luminaire uses a Hatch R12-60M transformer. Consult lamp manufacturers such as Sylvania, GE, Green Creative, Sora and Philips for compatible controls and dimming ranges with this transformer model as performance may vary. Due to inrush current, each lamp should be considered as a 50W load when used with dimmers and current limiters. Consult lamp or dimmer manufacturer for maximum lamps per dimmer. Lamp is secured in a GU5.3 ceramic bi-pin socket. Luminaire accommodates lamp diameter up to 1.97" (50.1mm) and MOL of 1.83" (46.4mm).

FRAME-IN (MUST ORDER SEPARATELY)

Frame-in types include IC Air-Tight or Non-IC Rated (must specify). Non-IC rated housings must be kept at a minimum of 3" away from insulation. Frame-in is equipped with quick connect to trim assembly for easy installation. Junction box is accessible from below the ceiling. Perforated mesh frame provided with frame-in kit, adheres to joint compound for seamless and trimless mounting.

INSTALLATION

Luminaire can accommodate up to 1" ceiling thickness. Luminaire is supplied with butterfly brackets to allow up-to 3" vertical adjustment. Compatible with flat bar, wood joist bar and EMT. Bar hangers must be ordered separately. Transformer max. ambient temperature 122°F (50°C), consult lamp manufacturer for operating temperature.

TRIM ASSEMBLY

Trim assembly includes integral power supply for each individual head. Quick connection supplied for easy installation and wiring to frame-in. Ease of installation and maintenance with access to power supply. Mounts to frame-in via heavy duty torsion springs.

ACCESSORIES

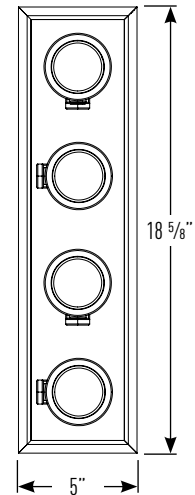
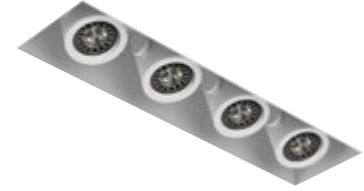
Luminaire will accommodate (2) accessories per head, accessory holder required. Must order one accessory holder and accessory per head, see page 2.

LISTING/WARRANTY

- ETL listed to US and Canadian standards for damp locations.
- (-IC Only) Air-Tight Certified ASTM E283
- (-IC Only) ETL listed for direct contact with insulation
- 1-Year Intense Limited Warranty



MX



Frame-in dimensions are on Page 2

Ceiling Cut Out: 19 1/4" x 5 1/2"
Horizontal Adjustability: 360°
Vertical Adjustability: 30°

Trim Part Number (Example: MR16-MXGU53RTL4WT2)

| Trim | Head Finish | Transformer | Option |
|-----------------|------------------------|------------------------|-------------------------|
| MR16-MXGU53RTL4 | B (Black) W (White) | T2 (120V/12V RS12-60X) | -S' (Integral 1" Snoot) |

Frame-In Part Number (Example: IP2-4FK-1-TL-I200)

| Frame-In Type | Voltage | Options |
|-------------------------------|--------------|-------------------------------|
| IP2-4FK-4-TL (Non-IC) | blank (120V) | I200 (Flat Bar Hangers) |
| IP2-4FK-4IC-TL (Air-Tight IC) | | I400 (Wood Joist Bar Hangers) |

Notes:

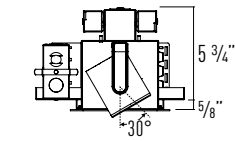
1. Snoot is integral to fixture and factory installed. Snoot's interior is black and compatible with accessory holder, black accessory holder recommended.

MR16-MXGU53RTL4

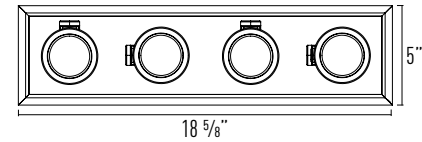
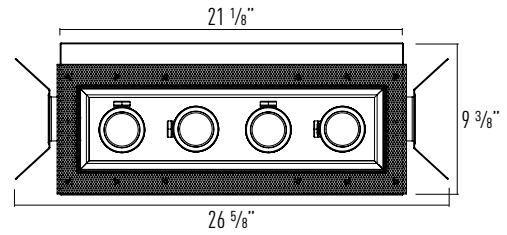
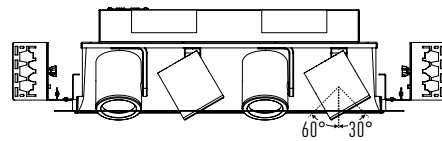
MX MR16 LED GU5.3 Recessed Multiple Trimless (4) Head

| | | | |
|----------|--|----------------|--|
| JOB NAME | | CATALOG NUMBER | |
| NOTES | | TYPE | |

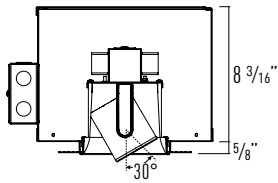
NON-IC DIMENSIONS



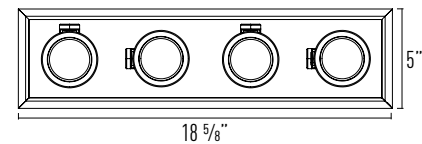
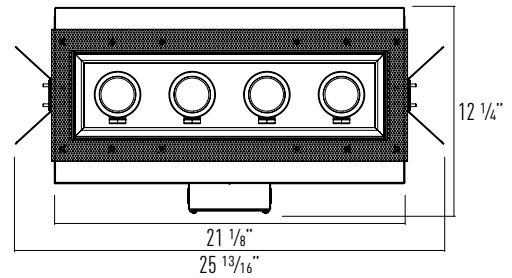
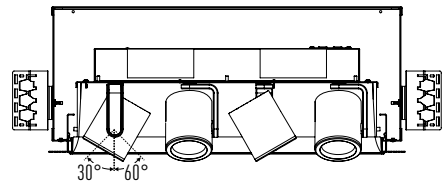
Ceiling Cut Out: 19 1/4" x 5 1/2"



AIR TIGHT IC DIMENSIONS



Ceiling Cut Out: 19 1/4" x 5 1/2"



ACCESSORIES

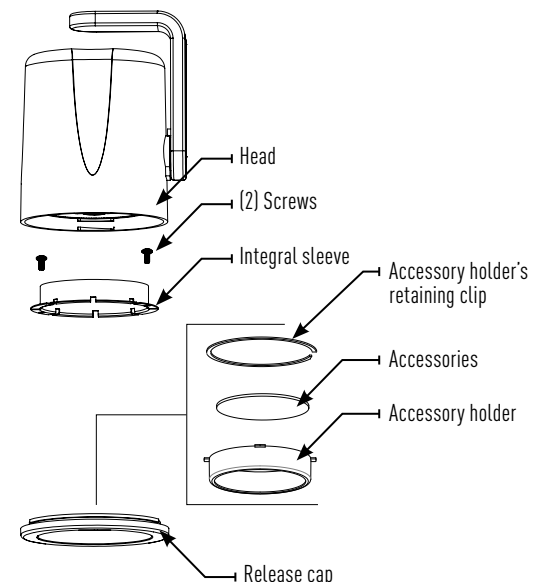
Luminaire will accommodate (2) accessories per head, accessory holder required. Must order one accessory holder and accessory per head.

INSTALLATION

1. Rotate release cap by turning counter clockwise. Remove two screws on release cap to remove integral sleeve.
2. Install accessories into accessory holder and replace accessory holder's retaining clip.
3. Place accessory holder and accessory against release cap and replace integral sleeve with two screws.
4. Replace release cap.

Accessories

| | |
|----------|---------------------------|
| LH47 | (Accessory Holder, Black) |
| LH47W | (Accessory Holder, White) |
| PFLMB-47 | (Hex Louver, Black) |
| PFL1-47 | (Prismatic Spread Lens) |
| PFL2-47 | (Linear Spread Lens) |
| PFL4-47 | (Soft Focus Lens) |



MX-MULTIPLES LUM-1219-17 P-18

INTENSE LIGHTING | 3340 E La Palma Ave, Anaheim, CA 92806 | tel 714 630-9877 | fax 714 630-9883
 For Intense Lighting's limited product warranty, go to www.intenselighting.com. For a printed copy of the warranty, you may call 800 961-5321.
 © 2017 Intense Lighting, LLC. All rights reserved. Note: This document is subject to change without notice.

intense® | a LEVITON® company