

# MR16-MXGU10SRTL4

MX MR16 LED GU10 Semi Recessed Multiple Trimless (4) Head

## FEATURES

- Uses MX accessories with LED lamps
- Easy lamp access with quarter turn cap
- MX construction and quality finishes
- Up to 45° Vertical Adjustment
- 360° Horizontal Adjustment

## LAMP (ORDERED SEPARATELY)

- 120V MR16 GU10 LED 15W max.
- 120V MR16 GU10 Halogen 35W max.

Lamp is secured in a GU10 ceramic twist and lock socket. Luminaire accommodates lamp diameter up to 1.97" (50.1mm) and MOL of 2.18" (55.3mm).

## FRAME-IN (MUST ORDER SEPARATELY)

Frame-in types include IC Air-Tight or Non-IC Rated (must specify). Non-IC rated housings must be kept at a minimum of 3" away from insulation. Frame-in is equipped with quick connect to trim assembly for easy installation. Junction box is accessible from below the ceiling. Perforated mesh frame provided with frame-in kit, adheres to joint compound for seamless and trimless mounting.

## INSTALLATION

Luminaire can accommodate up to 1" ceiling thickness. Luminaire is supplied with butterfly brackets to allow up-to 3" vertical adjustment. Compatible with flat bar, wood joist bar and EMT. Bar hangers must be ordered separately. Consult lamp manufacturer for operating temperature.

## TRIM ASSEMBLY

Trim assembly includes integral power supply for each individual head. Quick connection supplied for easy installation and wiring to frame-in. Ease of installation and maintenance with access to power supply. Mounts to frame-in via heavy duty torsion springs.

## ACCESSORIES

Luminaire will accommodate (2) accessories per head, accessory holder required. Must order one accessory holder and accessory per head, see page 2.

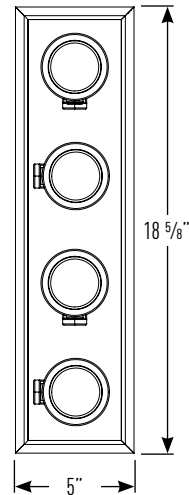
## LISTING/WARRANTY

- ETL listed to US and Canadian standards for damp locations.
- (-IC Only) Air-Tight Certified ASTM E283
- (-IC Only) ETL listed for direct contact with insulation



JOB NAME		CATALOG NUMBER	
NOTES		TYPE	

**MX**



Frame-in dimensions are on Page 2

Ceiling Cut Out: 19 1/4" x 5 1/2"

Horizontal Adjustability: 360°

Vertical Adjustability: 45°

Trim Example: MR16-MXGU10RTL4W

Trim	Head Finish	Option
MR16-MXGU10SRTL4	<input type="checkbox"/> B (Black) <input type="checkbox"/> W (White)	<input type="checkbox"/> -S <sup>1</sup> (Integral 1" Snoot)

Frame-In Example: IP2-4FK-4-TL-1200

Frame-In Type	Voltage	Options
<input type="checkbox"/> IP2-4FK-4-TL (Non-IC)	<input type="checkbox"/> blank (120V)	<input type="checkbox"/> -1200 (Flat Bar Hangers)
<input type="checkbox"/> IP2-4FK-4IC-TL (Air-Tight IC)		<input type="checkbox"/> -1400 (Wood Joist Bar Hangers)

## Notes:

1. Snoot is integral to fixture and factory installed. Snoot's interior is black and compatible with accessory holder, black accessory holder recommended.

MX MULTIPLES L/M-0525-16-P-17

## Intense Lighting

3340 E La Palma Ave, Anaheim, CA 92806 | tel 714 630-9877 | fax 714 630-9883

©2016 Intense Lighting, LLC. All rights reserved. Subject to change without notice.

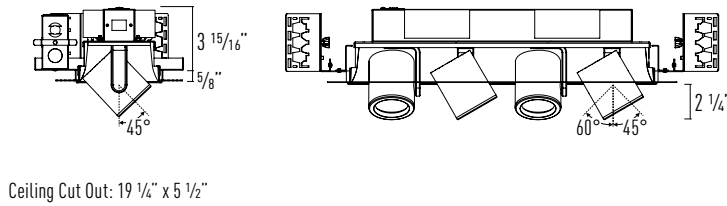
intense® a LEVITON® company  
LIGHTING

# MR16-MXGU10SRTL4

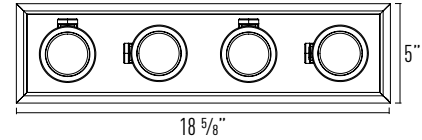
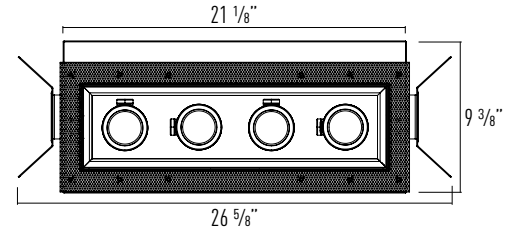
MX MR16 LED GU10 Semi Recessed Multiple Trimless (4) Head

JOB NAME		CATALOG NUMBER	
NOTES		TYPE	

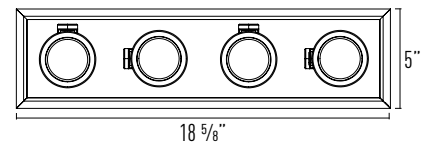
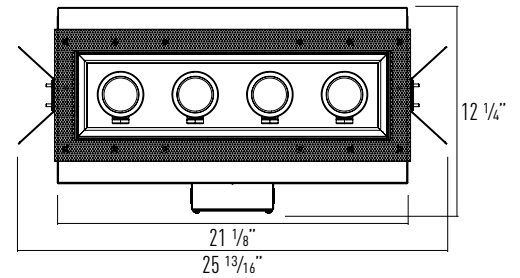
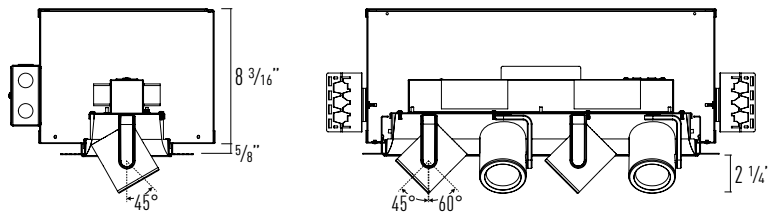
## NON-IC DIMENSIONS



Ceiling Cut Out: 19 1/4" x 5 1/2"



## AIR TIGHT IC DIMENSIONS



## ACCESSORIES

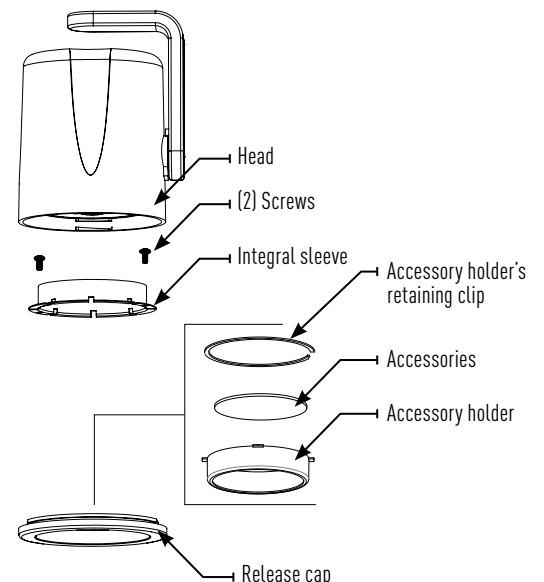
Luminaire will accommodate (2) accessories per head, accessory holder required.  
Must order one accessory holder and accessory per head.

## INSTALLATION

1. Rotate release cap by turning counter clockwise. Remove two screws on release cap to remove integral sleeve.
2. Install accessories into accessory holder and replace accessory holder's retaining clip.
3. Place accessory holder and accessory against release cap and replace integral sleeve with two screws.
4. Replace release cap.

### Accessories

- LH47** (Accessory Holder, Black)
- LH47W** (Accessory Holder, White)
- PFLMB-47** (Hex Louver, Black)
- PFL1-47** (Prismatic Spread Lens)
- PFL2-47** (Linear Spread Lens)
- PFL4-47** (Soft Focus Lens)



MX MULTIPLES I/M-0525-16-P-18

## Intense Lighting

3340 E La Palma Ave, Anaheim, CA 92806 | tel 714 630-9877 | fax 714 630-9883  
©2016 Intense Lighting, LLC. All rights reserved. Subject to change without notice.

intense® LIGHTING | a LEVITON company